



PROTECTA®



FastWall

- ✓ Quick And Easy To Install
- ✓ Cost Effective
- ✓ Durable And Reusable

This smart temporary walling solution is fast and easy to install, quickly creating barriers and rooms onsite.

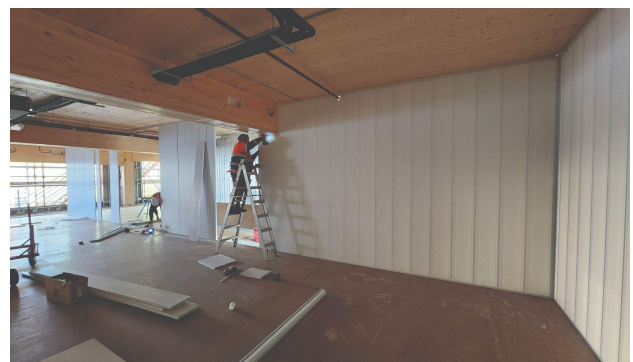
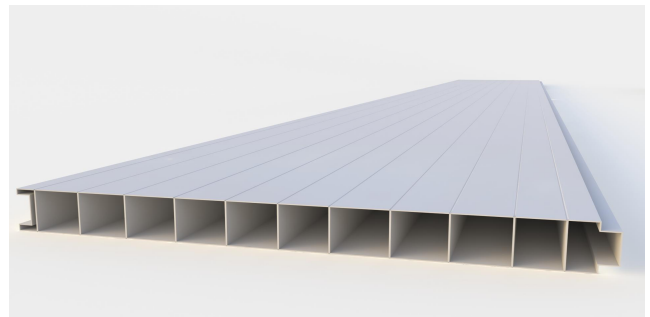
Key Benefits:

- Reusable and easily relocatable
- Pre-finished panels and tracking
- Durable and weatherproof PVC
- Extremely cost effective
- Available in six different length panels from 2.4m to 4.8m high
- Easy fit tongue and groove panel for fast installation and demounting
- Can be installed single-handedly
- Use for both walls and ceilings
- Complete with aluminium powder coated tracking and door units
- Single/double door units and window options

Main Applications:

The smartest, easiest and fastest way to create:

- Hoardings
- Cutting rooms
- Privacy barriers & site segregation
- Site amenities
- Acoustic enclosures
- Temporary or permanent offices
- Permanent walling solution for basement and car parks where fire sprinklers are installed





PROTECTA®



FastWall- Options

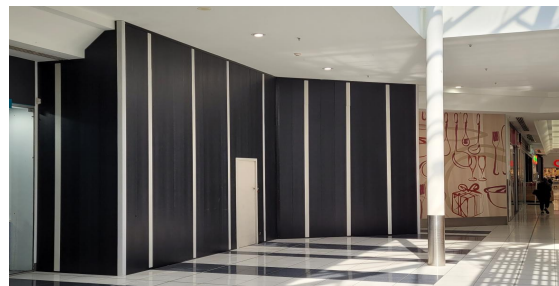
FastWall Freestanding

The FastWall box joiner is the perfect solution for creating freestanding hoarding. Using the HoardFast support post and weights, the box section fits over the post to provide a connecting point for the FastWall panels. Using this system, a temporary wall or delineation barrier can be installed in a very short space of time.



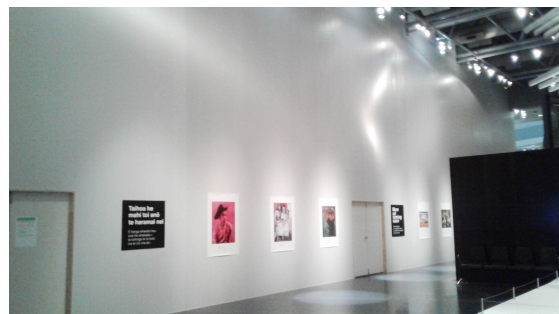
FastWall Black:

FastWall is also available in selected sizes in a black finish which is the preferred colour choice in many shopping centre projects nationwide.



FastWall Super Tall:

The FastWall box joiner can also be used as a connecting and support post for extra tall hoardings. These sections are available to create walls of up to 7.2m high. By incorporating the FastWall Box Joiner as a horizontal member, 2 standard height panels can be stacked to provide a wall to the height you require.



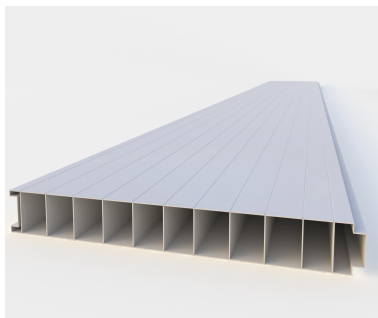
FastWall Windows and Access Hatches:

Windows or hatches can provide light or access behind the walling system in a basement application. Complete kits are available.



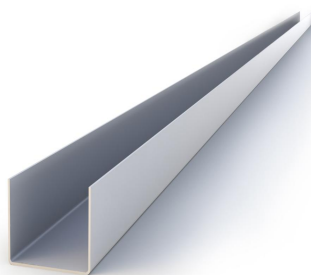
FastWall- System Components

FastWall Panels



Code	Description	Colour
FWS24	2.4m x 300mm x 30mm	White
FWS27, FWS27-B	2.7m x 300mm x 30mm	White, Black
FWS30, FWS30-B	3.0m x 300mm x 30mm	White, Black
FWS36	3.6m x 300mm x 30mm	White
FWS42	4.2m x 300mm x 30mm	White
FWS48, FWS48-B	4.8m x 300mm x 30mm	White, Black

Tracks and Corner Angles



Code	Description
FWB30-W, FWB30-B	FastWall Bottom Track / Wall Starter, 3.0m x 25mm
FWT30-W, FWT30-B	FastWall Top Track / Wall Starter, 3.0m x 50mm
FWC30-W, FWC30-B	FastWall PVC 90° Corner Section, 3.0m
EC90-30-W, EC90B-30	Hoarding Corner Cover, Angle 90°, 3.0m x 50mm x 50mm
EC45-30	Corner Angle 45°, 135° internal, 3.0m x 60mm x 60mm

FastWall- System Components

Door Kits



Code	Description
FWDK-870-S-LSL FWDK-870-S-PDL	870mm Single Door Kit with lever lock or digilock Includes a 2040mm x 870mm wide hollowcore-redicoat standard door, precut door jamb, door seal, two hinges, lever lockset and hinge screws. Recommended option - suits 3 panels in width (Other sizes available)
FWDK-870-D-LSL FWDK-870-D-PDL	870mm Double Door Kit with lever lock or digilock Includes two 2040mm x 870mm wide hollowcore-redicoat standard doors, precut door jamb, door seal, four hinges, lever lockset, barrel bolt and hinge screws. Recommended option - suits 6 panels in width (Other sizes available)

Window Units



Code	Description
FWW1208	FastWall Window Unit: 1200mm wide 800mm high (consult regarding other sizes), includes perspex sheet, jamb, stop beads.



FWSW1208	FastWall Sliding Window Unit: 1200mm wide x 800mm high (consult regarding other sizes) - Includes perspex sheet, jamb and stop beads.
----------	---



Scan to view installation of FastWall Floor to Ceiling System



Scan to view installation of FastWall Freestanding System