



**PROTECTA®**



# Protecta Film Window

- ✓ Easy Application
- ✓ Special Adhesive Technology
- ✓ UV Protection

Window and glass protection film is a smart solution to ensure that your windows remain clean from the start to the finish of your job.

#### Key Benefits:

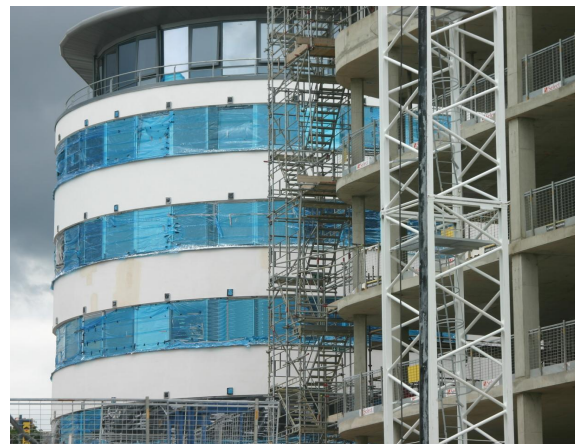
- Easy to roll out and press in place
- Special adhesive technology - sits tight against the window surface
- Protects windows from splashes and debris
- UV protected - perfect for both indoor and outdoor use

#### Main Applications:

- Protection of glass and frames on most windows and doors, against paint and mortar splashes

#### Important Information:

- Not suitable for use on the treated or tinted face of glass
- Not recommended to be applied for periods longer than 60 days
- Important information and precautions sheet **MUST** be read before use



Code	Dimensions
WF15	150mm x 100m
WF61	610mm x 100m
WF122	1220mm x 100m